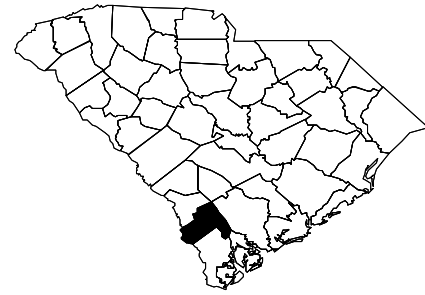




Diabetes In HAMPTON County, 2002



Produced by the South Carolina Department of Health and Environmental Control

Impact of Diabetes in the United States

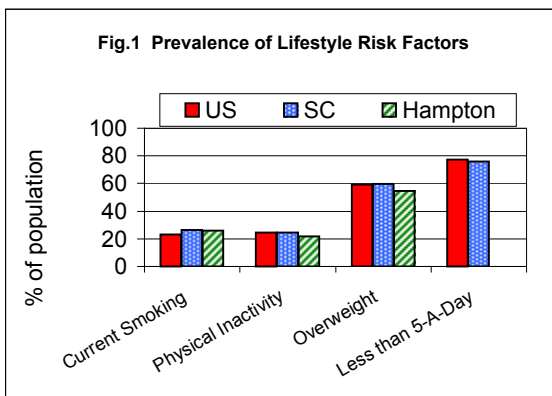
- Diabetes affects more than 17 million Americans and contributes to over 200,000 deaths a year.
- From 1980 through 2002, the number of Americans with diabetes more than doubled. People aged 65 years or older account for almost 40% of the population with diabetes.
- The direct and indirect costs of diabetes in the U.S. were nearly \$132 billion in 2002.
- 73,249 people died of diabetes in the U.S. in 2002.

Diabetes in South Carolina

- Approximately 300,000 South Carolinians are affected by diabetes, many of who were still undiagnosed in 2002. One of every seven patients in a South Carolina hospital has diabetes.
- The total direct costs of hospitalizations and emergency room visits were over \$928 million in 2001.
- Diabetes is the sixth leading cause of death in South Carolina, claiming more than 1,114 lives in 2002.

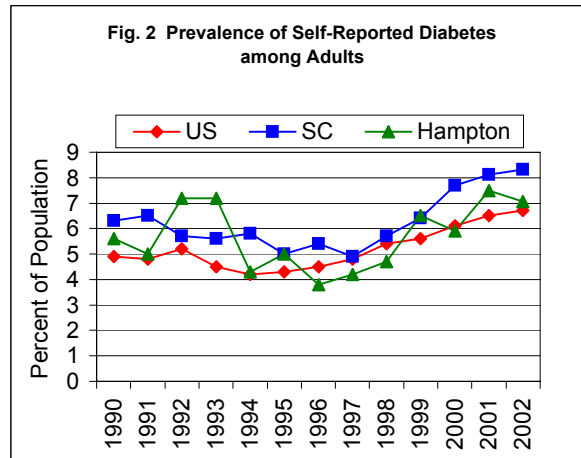
Behavioral Risk Factors

- Major behavioral risk factors, such as overweight, physical inactivity and unhealthy diet, are partially responsible for development of type 2 diabetes.



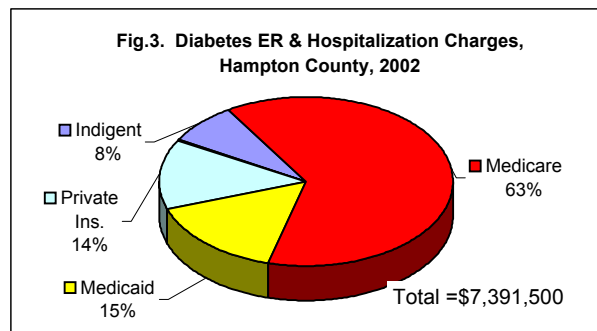
Diabetes Prevalence

- An estimated 1124 adults (7.1% of adults) in Hampton County suffer annually from Diabetes.



Hospital and Emergency Room Discharges

- In 2002, there were 103 hospitalizations for Diabetes in Hampton County for all ages.
- There were an additional 463 hospital discharges with diabetes-related conditions in Hampton County.
- In 2002, there were 117 emergency room (ER) visits for diabetes as the primary diagnosis, among which 96 (82%) were by African-American patients.
- There were 424 ER visits for diabetes as a related condition.



Complications

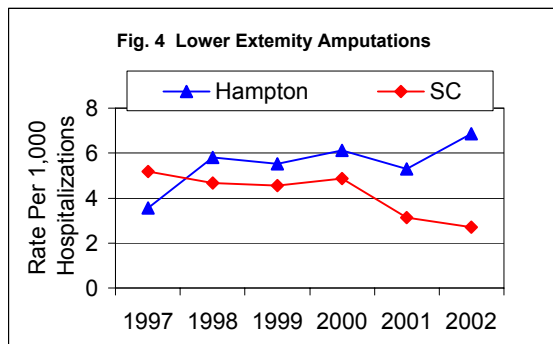
Four out of five (82%) patients hospitalized in SC

- for diabetes had complications in 2001.
- In 2002, nearly two-thirds of people in SC with diabetes had hypertension, compared with only one-fourth of people without diabetes.

Table 1. Hospitalizations for Diabetes Complications in Hampton County in 2002.

Diabetes Complication	Hospital Admissions	Percent of Diabetes Hospital Admissions	Total costs
Renal Failure	75	13%	\$1,271,800
Lower Extremity Amputation	22	4%	\$622,900
Keto-acidosis	30	5%	\$389,100
Retinopathy	41	7%	\$778,200

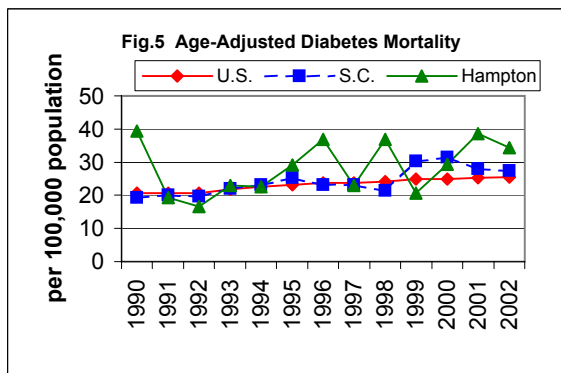
- Nearly half of people with diabetes have high cholesterol.
- In 2002, the rates for lower extremity amputations among blacks in SC were three to five times the rates among whites.



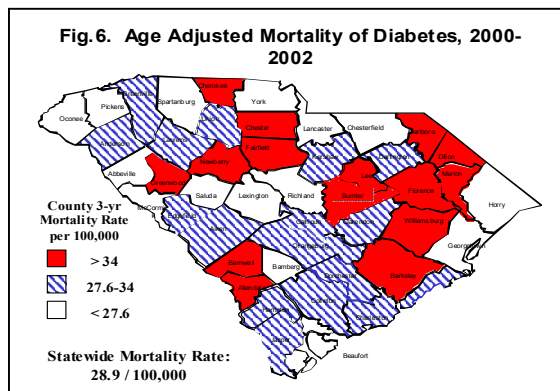
Mortality

Diabetes is the fifth leading cause of death in Hampton County.

A total of 7 people in Hampton County died from diabetes in 2002.



- The Hampton County mortality rate was 34.3/100,000 in 2002, close to the state average.
- Hampton County ranks #15 in diabetes mortality in South Carolina.



For more information about Diabetes contact:

Division of Diabetes Prevention and Control
DHEC Bureau of Community Health and Chronic Disease Prevention

<http://www.dhec.sc.gov/health/chcdp/diabetes/index.htm>
(803) 545-4471

Diabetes Initiative of South Carolina
<http://medicine.musc.edu/diabetes/>



Generated by: Office of Chronic Disease Epidemiology, Bureau of Community Health and Chronic Disease Prevention

http://www.scdhec.gov/hs/epidata/state_reports.htm

Data Sources:

Behavior Risk Factor Surveillance System
(803) 898-4467

Bureau of Community Health and Chronic Disease Prevention

Vital Records
Division of Biostatistics
(803) 898-3649
www.scdhec.net



Hospital discharges and ER visits, contact:

Office of Research and Statistics
SC Budget and Control Board
(803) 898-9958

www.orss.state.sc.us/hd

